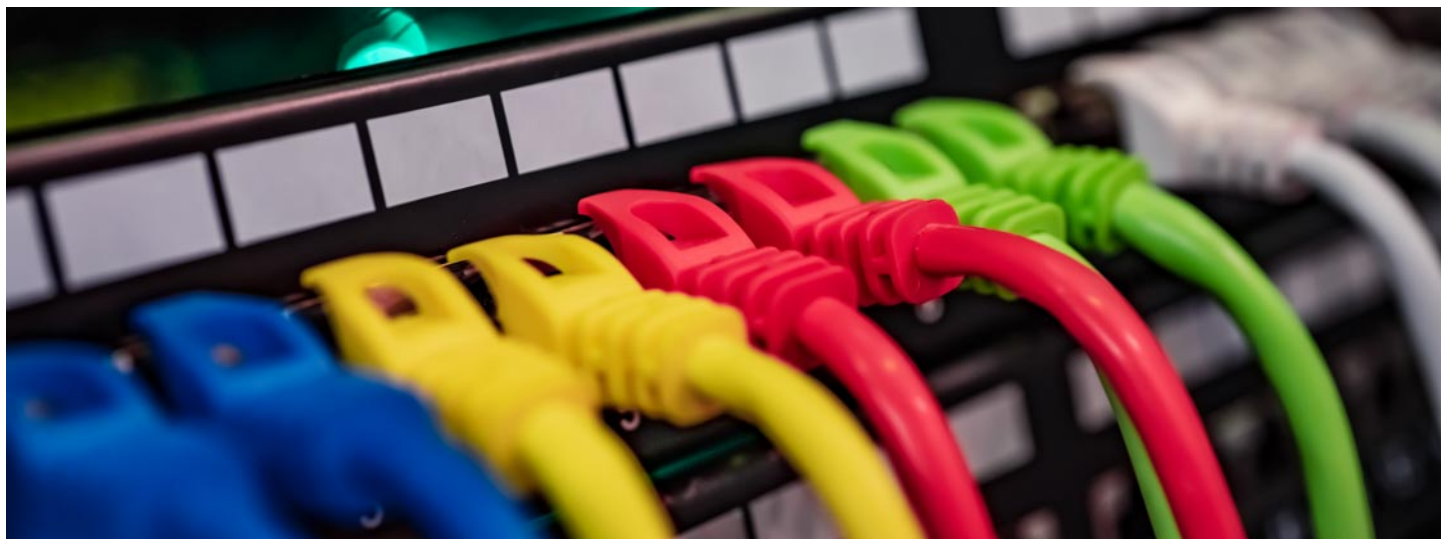


COMMUNICATIONS TECHNOLOGY, ASSOCIATE IN APPLIED SCIENCE



College(s): DA

Program Code: 0750

The Associate in Applied Science degree program in Communications Technology is a cooperative effort between Richard J. Daley College and the Electrical Joint Apprenticeship and Training Trust (EJATT) which is made up of the National Electrical Contractors Association (NECA) and the International Brotherhood of Electrical Workers (IBEW) Local Union 134. Through the joint effort of the college and EJATT, the program is dedicated to consistently provide state-of-the art education and training to apprentices, and through them to the residential and commercial building contractors in the Chicagoland area. This commitment to both the individual and industry requires not only providing electricians for today's market, but also for tomorrow's market and future technologies.

This selective admissions program requires students to submit a separate application or to take additional action before enrolling.

Program Requirements

Code	Title	Hours
General Education Coursework ¹		
ENGLISH 101	Composition	3
432IBEW 714	Technical Math I	3
Any Psychology, History, or related course		9
Required Program Core		
432IBEW 704	Construction Technology	4.5
432IBEW 705	Print Reading I	3.5
432IBEW 709	Print Reading II	3
432IBEW 711	Communications	4
432IBEW 715	Technical Math II	3

432IBEW 716	Electronics	4.5
432IBEW 717	Structured Wiring	4.5
432IBEW 718	Integrated Systems I	3.5
432IBEW 719	Integrated Systems II	4.5
432IBEW 720	Communication Systems Verification	3.5
432IBEW 721	Fiber Optics	3.5
432IBEW 722	Computer Networking	4.5
432IBEW 726	Low Voltage Systems Communications	3.5
Total Hours		65

¹ At least one course must meet the Human Diversity (HD) requirement.

Pathway

This is an **example course sequence** for students interested in pursuing Communications Technology. It does not represent a contract, nor does it guarantee course availability. If this pathway is followed as outlined, you will earn a Basic Certificate (BC), Advanced Certificate (AC), and Associate in Applied Science (AAS) degree in Communications Technology.

Semester-by-Semester Program Plan for Full-Time Students

Semester 1		Hours
432IBEW 704	Construction Technology	4.5
432IBEW 705	Print Reading I	3.5
432IBEW 714	Technical Math I	3
432IBEW 716	Electronics	4.5
432IBEW 717	Structured Wiring	4.5
Hours		20
Semester 2		Hours
432IBEW 718	Integrated Systems I	3.5
432IBEW 726	Low Voltage Systems Communications	3.5

432IBEW 721	Fiber Optics	3.5
432IBEW 715	Technical Math II	3
432IBEW 709	Print Reading II	3
Hours		16.5
Semester 3		
432IBEW 719	Integrated Systems II	4.5
432IBEW 711	Communications	4
432IBEW 720	Communication Systems Verification	3.5
432IBEW 722	Computer Networking	4.5
Hours		16.5
Semester 4		
ENGLISH 101	Composition ¹	3
Any Psychology, History, or related course ^{1,2}		9
Hours		12
Total Hours		65

¹ General Education Requirement

² At least one course must be HD

Choose your courses with your College Advisor.

Applicant requirements:

- Graduates of an accredited high school or have acceptable scores on the General Education Development (GED) test. Foreign and domestic high school education or domestic GED must be validated by official transcripts. Official transcripts will be accepted in place of the high school diploma if the graduation date is provided.
- At least 18 years old prior to application.
- Have taken two semesters of high school or college algebra and earned a minimum C grade in each semester prior to application. An official transcript is required.
- Be physically able, as determined by a physician, to safely perform the tasks of a construction electrician. A drug test is required.
- Have evidence of a qualifying grade on an aptitude test prescribed by the EJATT Local Union 134. The aptitude test covers English and Mathematics comprehension, along with a spatial ability evaluation.

Careers

This program can prepare students for the jobs listed below. Click on each one to learn more, including average earnings, annual job openings, and how much education people in that field have. For additional guidance and resources on career options, current City Colleges students and alumni can contact the Career Services Office (<https://www.ccc.edu/departments/Pages/Career-Services.aspx>).

Electricians

Job Description

Install, maintain, and repair electrical wiring, equipment, and fixtures. Ensure that work is in accordance with relevant codes. May install or service street lights, intercom systems, or electrical control systems.

Salary Based on Experience Level

Take a look at the average hourly/annual earnings for this career in Cook County

Lightcast earnings figures are based on OES data from the BLS and include base rate, cost of living allowances, guaranteed pay, hazardous-duty pay, incentive pay (including commissions and bonuses), on-call pay, and tips.

Annual Wages

Entry-Level 10 th Percentile	\$47,001
Median 50 th Percentile	\$94,161
Senior-Level 90 th Percentile	\$122,017

Hourly Wages

Entry-Level 10 th Percentile	\$23
Median 50 th Percentile	\$45
Senior-Level 90 th Percentile	\$59

Annual Job Openings

824 annual openings in Cook County

National Education Attainment

Here, you can see the level of education that people in this career complete.

Degree Program	% of Jobs
A high school diploma or less	32.89%
A certificate	61.71%
Some college	2.31%
An Associate degree	1.79%
A Bachelor's degree	0.00%
A Master's or Professional degree	1.31%
A Doctoral degree or more	0.00%

1.31% continue their education beyond an associate degree

Security and Fire Alarm Systems Installers

Job Description

Install, program, maintain, and repair security and fire alarm wiring and equipment. Ensure that work is in accordance with relevant codes.

Salary Based on Experience Level

Take a look at the average hourly/annual earnings for this career in Cook County

Lightcast earnings figures are based on OES data from the BLS and include base rate, cost of living allowances, guaranteed pay, hazardous-duty pay, incentive pay (including commissions and bonuses), on-call pay, and tips.

Annual Wages

Entry-Level 10 th Percentile	\$47,506
Median 50 th Percentile	\$65,017
Senior-Level 90 th Percentile	\$92,276

Hourly Wages

Entry-Level 10 th Percentile	\$23
Median 50 th Percentile	\$31
Senior-Level 90 th Percentile	\$44

Annual Job Openings

118 annual openings in Cook County

National Education Attainment

Here, you can see the level of education that people in this career complete.

Degree Program	% of Jobs
A high school diploma or less	41.41%
A certificate	48.58%
Some college	8.41%
An Associate degree	1.60%
A Bachelor's degree	0.00%
A Master's or Professional degree	0.00%
A Doctoral degree or more	0.00%

0.00% continue their education beyond an associate degree