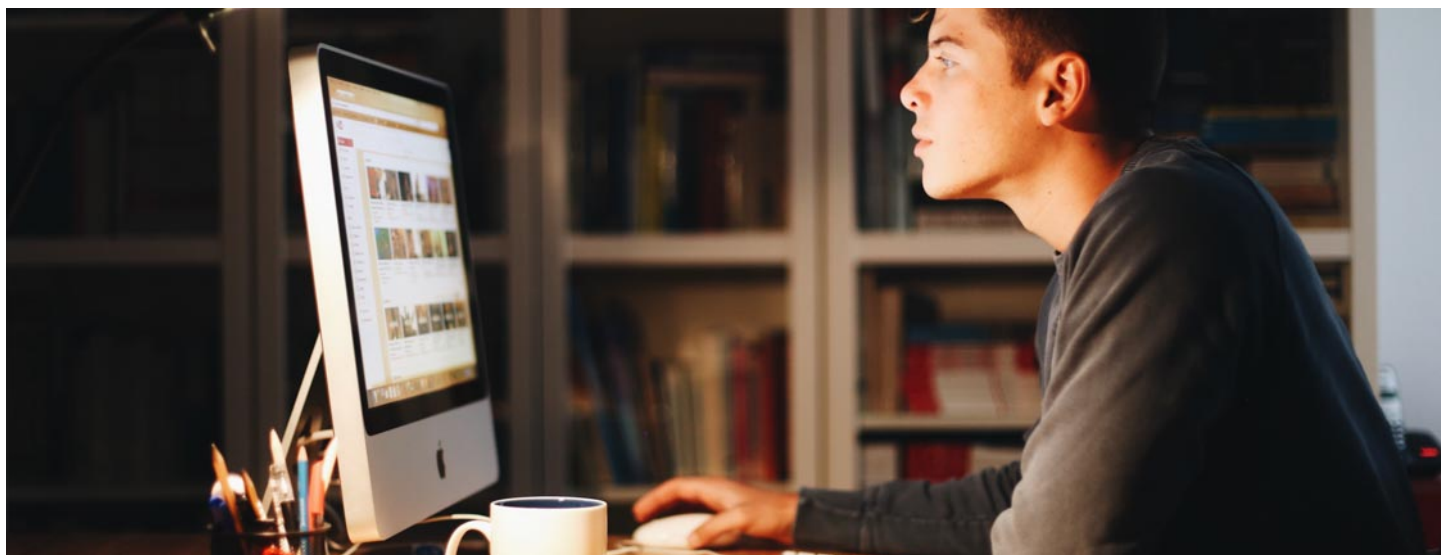


ASSOCIATE IN ARTS



College(s): DA, HW, KK, MX, OH, TR, WR

Program Code: 0210

The Associate in Arts (AA) degree prepares an individual for transfer to a four-year college or university. Consistent with the IAI model and the ICCB Administrative Rules, City Colleges of Chicago requires that the degree is inclusive of a minimum of 37 semester hours of General Education.

For students who want to earn an associate degree before transferring to a four-year institution, the Associate in Arts degree (AA) is the traditional choice for most students. The AA degree indicates a student has mastered the basics of higher education. Depending on the courses selected (<https://catalog.ccc.edu/iai-gecc/>) for the General Education requirements, this degree plan provides you with the IAI General Education Core Curriculum (GECC). In addition, you will select elective classes (23 credit hours).

Students are required to take at least one course that fulfills the State of Illinois Human Diversity (HD) requirement for the Associate in Arts degree.

To learn more about transferring to a four-year college or university, visit CCC's transfer site. (<https://pages.ccc.edu/apply/transfer/>)

Code	Title	Hours
General Education		
ENGLISH 101	Composition	3
ENGLISH 102	Composition	3
SPEECH 101	Fundamentals Of Speech Communication	3
Mathematics		3
Fine Arts & Humanities ¹		9
Social and Behavioral Sciences		9
Physical Sciences & Life Sciences ²		7

AA Electives

Students should work with a College Advisor to select appropriate core and elective courses or select an AA semester map as a guide. 23

Total Hours 60

- ¹ At least one (1) of the courses must be from the Fine Arts category, and at least one (1) must be from the Humanities category.
- ² At least one (1) of the courses must be from the Physical Sciences category, and at least one (1) must be from the Life Sciences category. At least one (1) lab course is required.

At least one course must meet the Human Diversity (HD) requirement.

AA Transfer Pathways

Recommended electives may vary by transfer institution. Choose your courses with your College Advisor.

Institution-specific transfer guides and agreements can be found on CCC's transfer site (<https://www.ccc.edu/services/Pages/Transfer-Guides.aspx>).

- Accounting, Associate in Arts (<https://catalog.ccc.edu/transfer-pathways/accounting-associate-arts/>)
- Business/Economics, Associate in Arts (<https://catalog.ccc.edu/transfer-pathways/business-economics-associate-arts/>)
- Business/Finance, Associate in Arts (<https://catalog.ccc.edu/transfer-pathways/business-finance-associate-arts/>)
- Child Development: Early Childhood, Associate in Arts (<https://catalog.ccc.edu/transfer-pathways/child-development-early-childhood-associate-arts/>)
- Communications, Associate in Arts (<https://catalog.ccc.edu/transfer-pathways/communications-associate-arts/>)
- Comparative Religion, Associate in Arts (<https://catalog.ccc.edu/transfer-pathways/comparative-religion-associate-arts/>)

- Creative and Publishable Writing, Associate in Arts (<https://catalog.ccc.edu/transfer-pathways/creative-and-publishable-writing-associate-arts/>)
- Criminal Justice, Associate in Arts (<https://catalog.ccc.edu/transfer-pathways/criminal-justice-associate-arts/>)
- Dance, Associate in Arts (<https://catalog.ccc.edu/transfer-pathways/dance-associate-arts/>)
- Elementary Education, Associate in Arts (<https://catalog.ccc.edu/transfer-pathways/elementary-education-associate-arts/>)
- English Education, Associate in Arts (<https://catalog.ccc.edu/transfer-pathways/english-education-associate-arts/>)
- English, Associate in Arts (<https://catalog.ccc.edu/transfer-pathways/english-associate-arts/>)
- French Education, Associate in Arts (<https://catalog.ccc.edu/transfer-pathways/french-education-associate-arts/>)
- Gender, Women's, and Sexuality Studies, Associate in Arts (<https://catalog.ccc.edu/transfer-pathways/gender-womens-and-sexuality-studies-associate-arts/>)
- History, Associate in Arts (<https://catalog.ccc.edu/transfer-pathways/history-associate-arts/>)
- Human Development and Family Studies, Associate in Arts (<https://catalog.ccc.edu/transfer-pathways/human-development-family-studies-associate-arts/>)
- Human Geography, Associate in Arts (<https://catalog.ccc.edu/transfer-pathways/human-geography-associate-arts/>)
- Insurance, Associate in Arts (<https://catalog.ccc.edu/transfer-pathways/insurance-associate-arts/>)
- International Studies, Associate in Arts (<https://catalog.ccc.edu/transfer-pathways/international-studies-associate-arts/>)
- Journalism, Associate in Arts (<https://catalog.ccc.edu/transfer-pathways/journalism-associate-arts/>)
- Latin American and Latin@ Studies, Associate in Arts (<https://catalog.ccc.edu/transfer-pathways/latin-american-latinx-studies-associate-arts/>)
- Music (General), Associate in Arts (<https://catalog.ccc.edu/transfer-pathways/music-general-associate-arts/>)
- Philosophy, Associate in Arts (<https://catalog.ccc.edu/transfer-pathways/philosophy-associate-arts/>)
- Photography, Associate in Arts (<https://catalog.ccc.edu/transfer-pathways/photography-associate-arts/>)
- Physical Education, Associate in Arts (<https://catalog.ccc.edu/transfer-pathways/physical-education-associate-arts/>)
- Political Science, Associate in Arts (<https://catalog.ccc.edu/transfer-pathways/political-science-associate-arts/>)
- Psychology, Associate in Arts (<https://catalog.ccc.edu/transfer-pathways/psychology-associate-arts/>)
- Social Science Education, Associate in Arts (<https://catalog.ccc.edu/transfer-pathways/social-science-education-associate-arts/>)
- Social Work, Associate in Arts (<https://catalog.ccc.edu/transfer-pathways/social-work-associate-arts/>)
- Sociology, Associate in Arts (<https://catalog.ccc.edu/transfer-pathways/sociology-associate-arts/>)
- Spanish Education, Associate in Arts (<https://catalog.ccc.edu/transfer-pathways/spanish-education-associate-arts/>)
- Special Education, Associate in Arts (<https://catalog.ccc.edu/transfer-pathways/special-education-associate-arts/>)
- Theater Art, Associate in Arts (<https://catalog.ccc.edu/transfer-pathways/theater-art-associate-arts/>)
- Urban Studies, Associate in Arts (<https://catalog.ccc.edu/transfer-pathways/urban-studies-associate-arts/>)
- World Languages, Associate in Arts (<https://catalog.ccc.edu/transfer-pathways/world-languages-associate-arts/>)